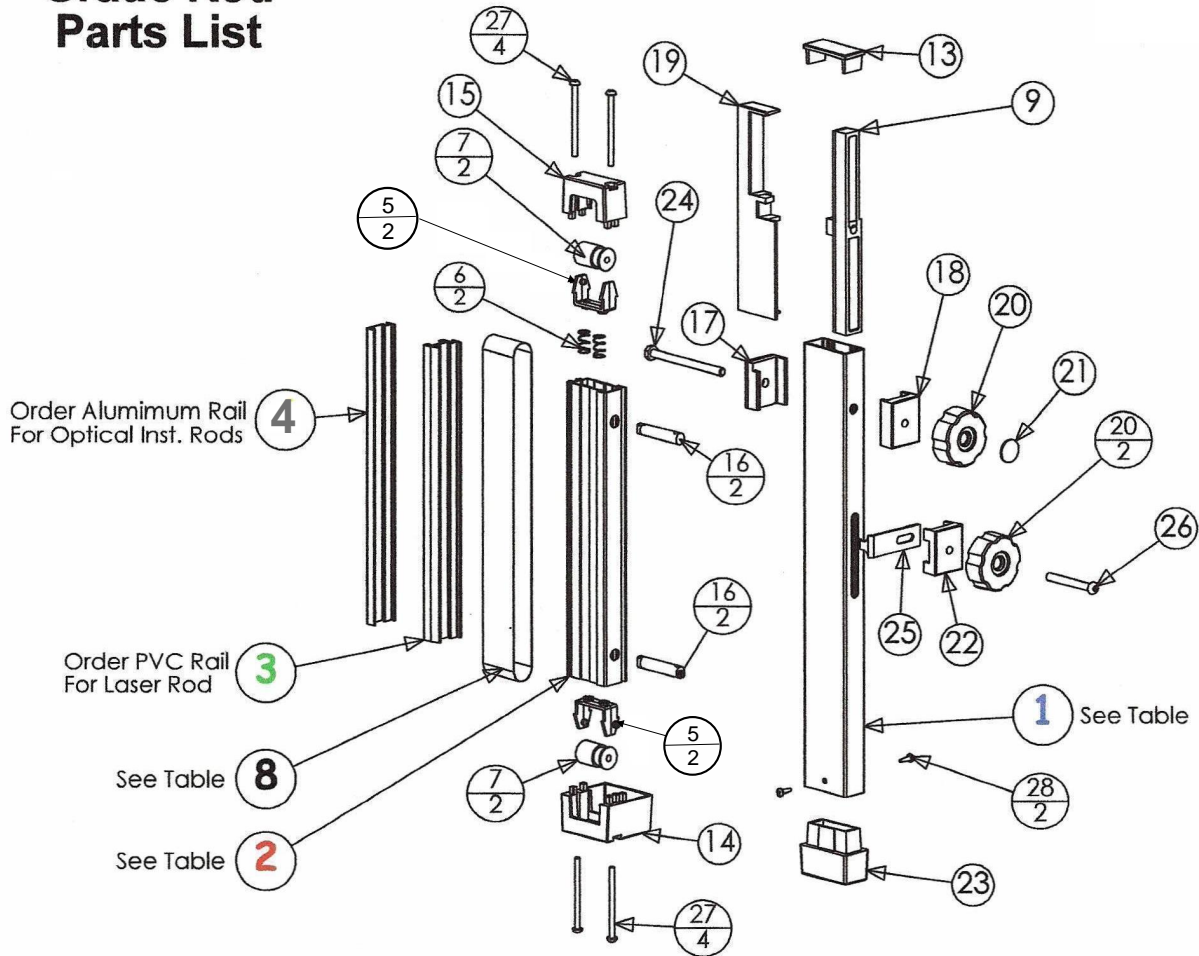


Grade Rod Parts List



Housing Configurations (Items # 1 & 2)		
Rod	Rear Housing	Front Housing
10 FT	1000-1020-10	1000-1021-10
15 FT	1000-1020-15	1000-1021-15
3 M	1000-1020-3	1000-1021-3
5 M	1000-1020-5	1000-1021-5

Rail Configurations (Items # 3 & 4)		
Rod	Laser PVC Rail	Survey Rail Alum.
10 FT	1000-1022-10	1000-1032-10
15 FT	1000-1022-15	1000-1032-15
3 M	1000-1022-3	1000-1032-3
5 M	1000-1022-5	1000-1032-5

Tape Configurations (Item #8)		
Item	Part Number	Description
10 FT	1000-1023	10ths /Cut & Fill
10 FT	1000-1026	10ths Full Face
10 FT	1000-1036	Inches /Cut & Fill
10 FT	1000-1037	Inches / 10ths
10 FT	1000-1038	Inches Full Face
15 FT	1000-1501	10ths /Cut & Fill
15 FT	1000-1504	10ths Full Face
3 M	1000-1024	Metric Full Face
3 M	1000-1035	Metric /Cut & Fill
5 M	1000-1502	Metric Full Face
5 M	1000-1503	Metric /Cut & Fill

Item	Part Number	Description	Qty
1	1000-1020-(X)	Housing, Rear Rod (See Table)	1
2	1000-1021-(X)	Housing, Front Rod (See Table)	1
3	1000-1022-(X)	Rail, Black PVC (See Table)	1
4	1000-1032-(X)	Rail, Aluminum (See Table)	1
8	See Table	Tape (See Tape Configuration Table)	1
5	1000-1011	SUPPORT, ROLLER	2
6	0000-1217	Spring, OD .360/ ID .310/ wire .026	2
7	1000-1018	ROLLER, TAPE	2
9	1000-1014	SLIDE, TAPE LOCK ASSY	1
13	1000-1002	CAP, REAR ROD TOP	1
14	1000-1001	CAP, FRONT ROD BOTTOM	1
15	1000-1000	CAP, FRONT ROD TOP	1
16	1000-1019	DOWELL, TOP & BOTTOM CAPS	2
17	1000-1005	CLAMP, ROD LOCK (LEFT)	1
18	1000-1004	CLAMP, ROD LOCK (RIGHT)	1
19	1000-1008	SLIDE, TAPE LOCK (LEFT)	1
20	1000-1015	KNOB, LOCK ROD LARGE	2
21	Supplied w/ Knob	Cover, Rod Lock Knob Only	1
22	1000-1012	GUIDE, TAPE LOCK PIN	1
23	1000-1003	FOOT, REAR ROD	1
24	0000-1600	BOLT, 1/4-20 X 3 1/4 HXHD Z	1
25	1000-1013	PIN, TAPE LOCK	1
26	0000-1604	SCREW, 1/4-20 X 2 BH SS	1
27	0000-1089	SCREW, 8-32 X 2.5 PHPAN	4
28	0000-1180	SCREW, # 6-3/8 PHPN MS SS	2